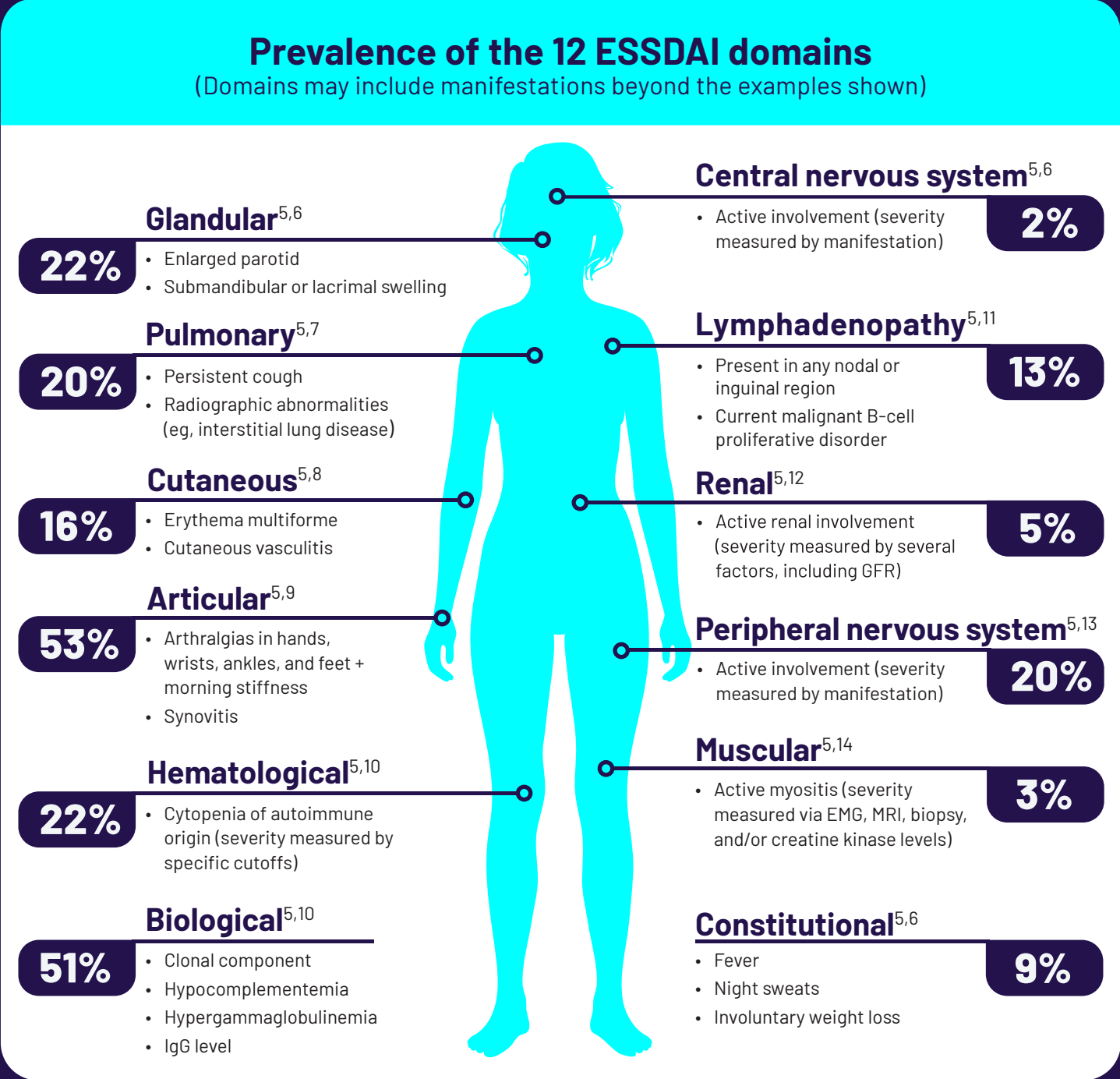


Sjögren's disease

is a serious, systemic autoimmune disease that can be progressive¹⁻⁴

Discover how EULAR Sjögren's syndrome disease activity index (ESSDAI) organizes systemic activity into measurable domains



Disease activity level classification by ESSDAI^{15,16}

Level of disease activity	Score
Mild disease activity	<5
Moderate disease activity	5-13
High disease activity	≥14

Each domain is divided into 3 to 4 levels of activity, each of which has a score based on domain weight. The sum of individual domains is the ESSDAI score, with a maximum score of 123.

EMG, electromyography; EULAR, European Alliance of Associations for Rheumatology; GFR, glomerular filtration rate; IgG, immunoglobulin G; MRI, magnetic resonance imaging.

Could your patients be experiencing manifestations beyond dryness?

Explore key questions to deepen your insights

Use questions based on ESSDAI to foster better conversations with your patients. Doing so allows you to go deeper and gain a better understanding of their disease beyond classic sicca symptoms.

Sample questions per domain⁵



Glandular domain

- Have you noticed any swelling in your face or neck?



Pulmonary domain

- Have you been experiencing shortness of breath or a persistent cough?



Articular domain

- Have you had pain in your hands, wrists, ankles, and feet in the past 4 weeks?
- Have you noticed any stiffness in the morning lasting for at least 30 minutes?



Renal domain

- Have you noticed any changes in your urine color or volume?
- Have you experienced any swelling in your legs or feet?



Lymphadenopathy domain

- Have you noticed any swollen lymph nodes?



Peripheral nervous system domain

- Have you experienced any numbness, tingling, or burning sensations in your extremities?



Cutaneous domain

- Have you noticed any skin rashes or lesions?
- Have you experienced any changes in skin color or texture?



Muscular domain

- Have you experienced any muscle pain or weakness?



Central nervous system domain

- Have you experienced any headaches, dizziness, or confusion?



Constitutional domain

- Have you experienced fever or night sweats in the past 4 weeks?

Each domain requires a thorough evaluation of Sjögren's disease-related signs and symptoms, guided by detailed definitions to determine the level of disease activity. In some cases, laboratory or imaging assessments may also be necessary to accurately assign an ESSDAI score.

References: **1.** Brito-Zerón P et al. *Nat Rev Dis Primers*. 2016;2:16047. doi:10.1038/nrdp.2016.47 **2.** Ramos-Casals M et al. *Ann Rheum Dis*. 2020;79:3-18. **3.** Kassan SS, Moutsopoulos HM. *Arch Intern Med*. 2004;164(12):1275-1284. **4.** Thalayasingam N et al. *Rheumatology (Oxford)*. 2021;60(suppl 6):vi53-vi61. **5.** Seror R et al. *RMD Open*. 2015;1:e000022. doi:10.1136/rmdopen-2014-000022 **6.** Mariette X, Criswell LA. *N Engl J Med*. 2018;378(10):931-939. **7.** Flament T et al. *Eur Respir Rev*. 2016;25(140):110-123. **8.** André F, Böckle BC. *J Dtsch Dermatol Ges*. 2022;20(7):980-1002. **9.** Ramos-Casals M et al. *Rheumatology (Oxford)*. 2015;54(12):2230-2238. **10.** Retamozo S et al. *Clin Exp Rheumatol*. 2019;37(suppl 118)(3):S97-S106. **11.** Stergiou IE et al. *Clin Exp Rheumatol*. 2022;40(12):2357-2362. **12.** Aiyegbusi O et al. *Rheumatol Ther*. 2021;8(1):63-80. **13.** McCoy SS, Baer AN. *Curr Treatm Opt Rheumatol*. 2017;3(4):275-288. **14.** Colafrancesco S et al. *Clin Exp Rheumatol*. 2015;33(4):457-464. **15.** Seror R et al. *Ann Rheum Dis*. 2016;75(2):382-389. **16.** Seror R et al. *Ann Rheum Dis*. 2010;69(6):1103-1109.