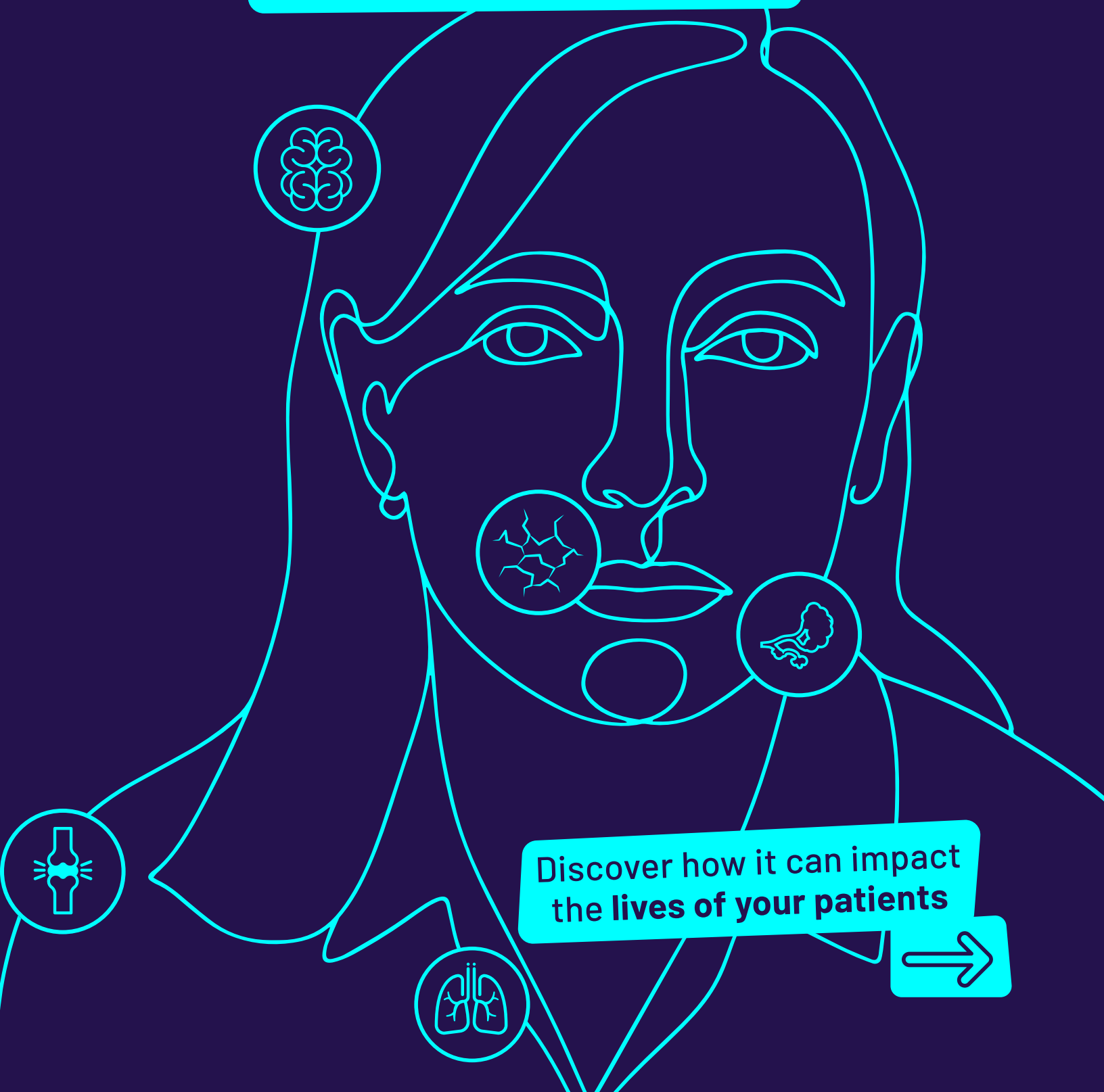


Sjögren's disease

**is a serious, systemic
autoimmune disease that
can be progressive¹⁻⁴**



Discover how it can impact
the lives of your patients

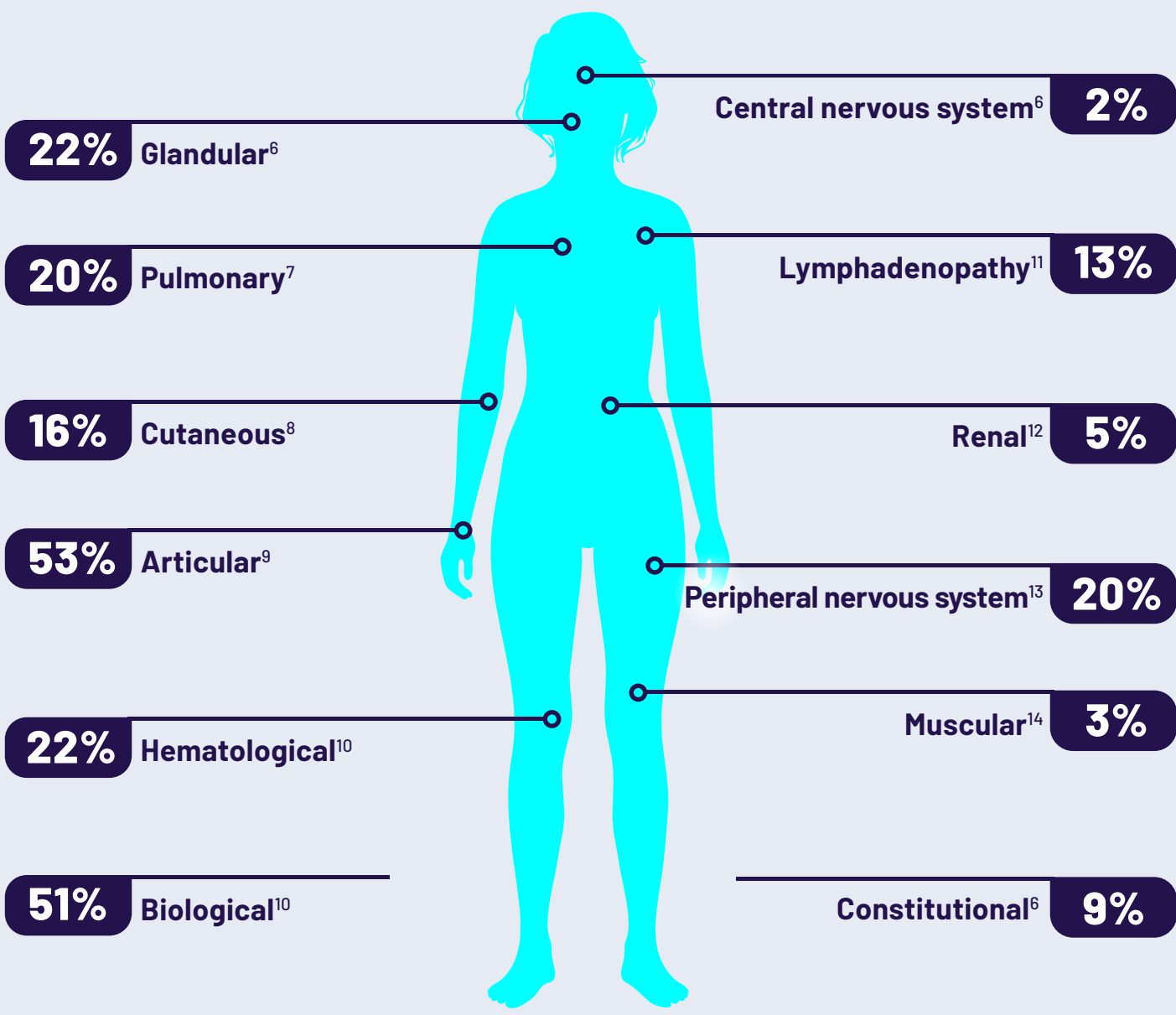


Sjögren’s disease (SjD) may extend far beyond dryness⁵

30%-40%

of patients develop organ involvement beyond dryness⁶

Prevalence of the 12 domains of ESSDAI



The disease’s heterogeneity often makes progression unpredictable. Existing symptoms can worsen, and new manifestations can emerge.¹

Complications of SjD can be life-threatening¹⁵

- Lymphoma:**
10 to 44 times higher risk in patients with SjD than in healthy individuals¹⁶
- Interstitial lung disease:**
Up to 61% of patients with SjD have nonspecific interstitial pneumonia¹⁷
- Cardiovascular impact:**
34% increased risk of coronary morbidity compared with the general population^{18*}
46% increased risk of cerebrovascular morbidity compared with the general population^{18*}

Nearly 50% increase in mortality† compared with the general population¹⁹

SjD is a constant presence causing daily challenges that impact quality of life²⁰⁻²²

~50% of patients report a disruption in their sex life, social activities, or ability to work^{20‡}

People may not recognize that their symptoms are part of SjD²³

 ~90% of patients report ocular and/or mouth dryness. It is one of the top reasons patients look for care ²⁰	 Patients who have dental decay report lower quality of life than other patients with SjD ²²
 Up to 96% of patients report joint pain, which can be debilitating ²⁴	 Up to 80% of patients report fatigue, which can be profound and is associated with depression and anxiety ^{25,26}

97% of patients report wanting **MORE treatment options**^{20*}



At present, there are **no FDA-approved therapies** targeting the underlying pathogenesis of SjD or slowing disease progression.^{5,27}



Novartis is partnering with experts and universities to **explore new ways** to target B-cell hyperactivity and BAFF.

Novartis is committed to **innovating in SjD**

BAFF, B-cell activating factor.

*Based on the “Living with SjD” survey assessing demographics, symptoms, quality of life, cost, and treatment in adult patients with SjD (N=2961), includes respondents that “somewhat agreed” or “strongly agreed.”

References: **1.** Brito-Zerón P et al. Sjögren syndrome. *Nat Rev Dis Primers*. 2016;2:16047. doi:10.1038/nrdp.2016.47 **2.** Ramos-Casals M et al. EULAR recommendations for the management of Sjögren's syndrome with topical and systemic therapies. *Ann Rheum Dis*. 2020;79:3-18. **3.** Kassan SS, Moutsopoulos HM. Clinical manifestations and early diagnosis of Sjögren syndrome. *Arch Intern Med*. 2004;164(12):1275-1284. **4.** Thalayasingam N et al. New developments in Sjogren's syndrome. *Rheumatology (Oxford)*. 2021;60(suppl 6):vi53-vi61. **5.** Carsons SE, Patel BC. *Sjögren syndrome*. StatPearls Publishing; 2025. Updated July 31, 2023. Accessed June 2, 2025. <https://www.ncbi.nlm.nih.gov/books/NBK431049/?report=printable> **6.** Mariette X, Criswell LA. Primary Sjögren's syndrome. *N Engl J Med*. 2018;378(10):931-939. **7.** Flament T et al. Pulmonary manifestations of Sjögren's syndrome. *Eur Respir Rev*. 2016;25(140):110-123. **8.** André F, Böckle BC. Sjögren's syndrome. *J Dtsch Dermatol Ges*. 2022;20(7):980-1002. **9.** Ramos-Casals M et al. Characterization of systemic disease in primary Sjögren's syndrome: EULAR-SS Task Force recommendations for articular, cutaneous, pulmonary and renal involvements. *Rheumatology (Oxford)*. 2015;54(12):2230-2238. **10.** Retamozo S et al. Systemic manifestations of primary Sjögren's syndrome out of the ESSDAI classification: prevalence and clinical relevance in a large international, multi-ethnic cohort of patients. *Clin Exp Rheumatol*. 2019;37(suppl 118)(3):S97-S106. **11.** Stergiou IE et al. The clinical phenotype of primary Sjögren's syndrome patients with lymphadenopathy. *Clin Exp Rheumatol*. 2022;40(12):2357-2362. **12.** Aiyegbusi O et al. Renal disease in primary Sjögren's syndrome. *Rheumatol Ther*. 2021;8(1):63-80. **13.** McCoy SS, Baer AN. Neurological complications of Sjögren's syndrome: diagnosis and management. *Curr Treatm Opt Rheumatol*. 2017;3(4):275-288. **14.** Colafrancesco S et al. Myositis in primary Sjögren's syndrome: data from a multicentre cohort. *Clin Exp Rheumatol*. 2015;33(4):457-464. **15.** Brito-Zerón P et al. Mortality risk factors in primary Sjögren syndrome: a real-world, retrospective, cohort study. *eClinicalMedicine*. 2023;61:102062. doi:10.1016/j.eclinm.2023.102062 **16.** Retamozo S et al. Prognostic markers of lymphoma development in primary Sjögren syndrome. *Lupus*. 2019;28(8):923-936. **17.** Stojan G et al. Pulmonary manifestations of Sjögren's syndrome. *Curr Allergy Asthma Rep*. 2013;13(4):354-360. **18.** Beltai A et al. Cardiovascular morbidity and mortality in primary Sjögren's syndrome: a systematic review and meta-analysis. *Arthritis Care Res (Hoboken)*. 2020;72(1):131-139. **19.** Huang H et al. Mortality in patients with primary Sjögren's syndrome: a systematic review and meta-analysis. *Rheumatology (Oxford)*. 2021;60(9):4029-4038. **20.** McCoy SS et al. A comprehensive overview of living with Sjögren's: results of a National Sjögren's Foundation survey. *Clin Rheumatol*. 2022;41(7):2071-2078. **21.** Perella C et al. Patient experience of Sjögren's disease and its multifaceted impact on patients' lives. *Rheumatol Ther*. 2023;10: 601-614. **22.** McCoy SS et al. National Sjögren's Foundation survey: burden of oral and systemic involvement on quality of life. *J Rheumatol*. 2021;48(7):1029-1036. **23.** Meinecke A et al. Impact of time to diagnosis in patients with primary Sjögren's syndrome: a cross-sectional study. *Clin Exp Rheumatol*. 2024;42(12):2444-2452. **24.** Rozis M et al. Musculoskeletal manifestations in Sjogren's syndrome: an orthopedic point of view. *Clin Med*. 2021;10(8):1574. **25.** Negrini S et al. Sjögren's syndrome: a systemic autoimmune disease. *Clin Exp Med*. 2022;22(1):9-25. **26.** Cui Y et al. Anxiety and depression in primary Sjögren's syndrome: a cross-sectional study. *BMC Psychiatry*. 2018;18(1):131. **27.** Birt JA et al. Sjögren's syndrome: managed care data from a large United States population highlight real-world health care burden and lack of treatment options. *Clin Exp Rheumatol*. 2017;35(1):98-107.